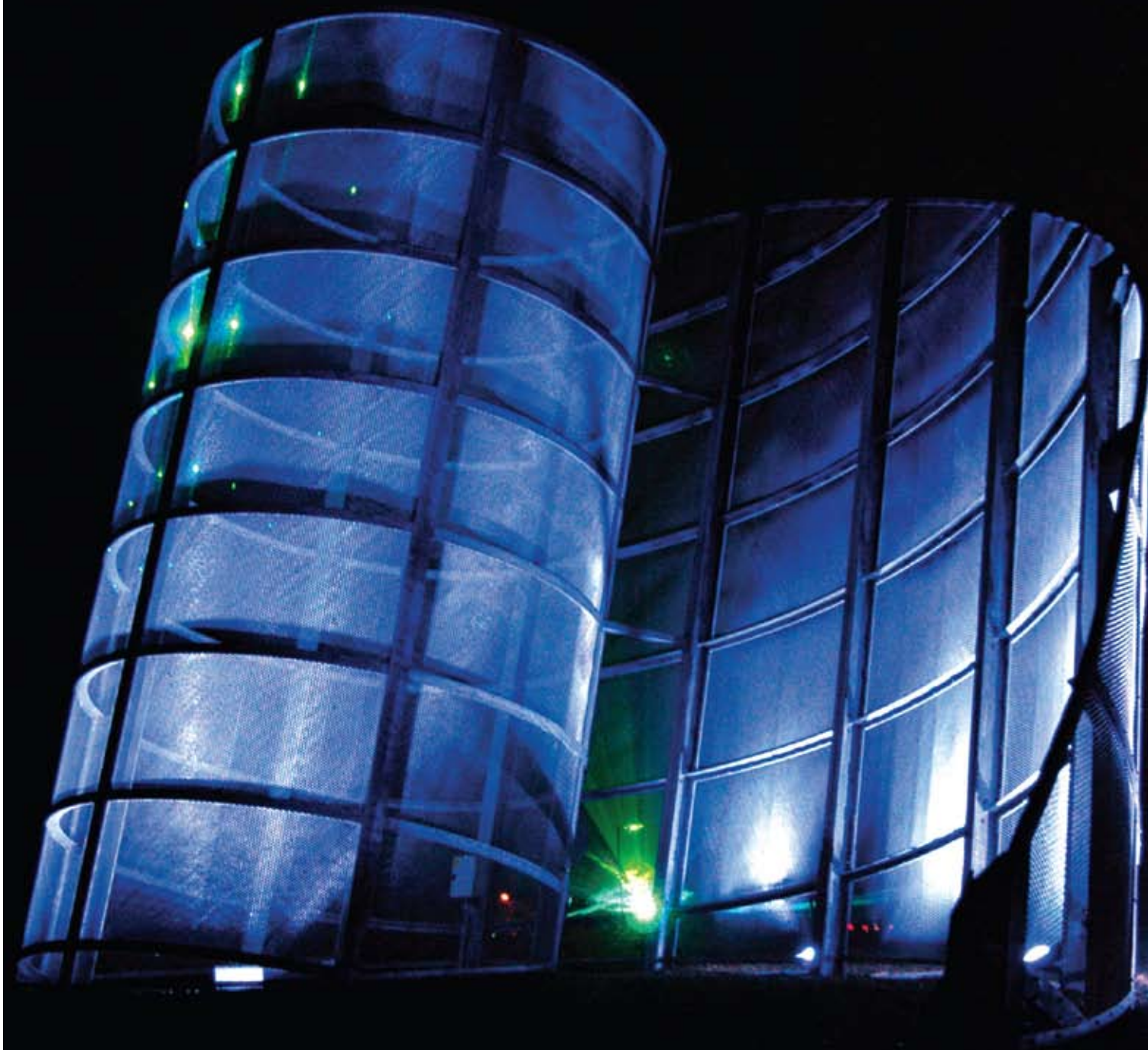




# Focus On **HAVERHILL**

**Haverhill** ENTERPRISE



### ***The Spirit of Enterprise***

*Designed by Rob Olins, following consultation with local schools and organisations, the sculpture was commissioned in 2000. A staggering 70% of local businesses were involved in funding the project. There is a strong tradition in Haverhill of business working in partnership with the community.*

**Haverhill** is home to the world's first laser-lit roundabout. This **iconic** sculpture, positioned at the town's western gateway, signifies the **spirit of enterprise** and **innovation** that has long breathed life into the town. It is a **striking symbol** of Haverhill's **rich** industrial profile, its status as a manufacturing centre of excellence and its leap into the age of technology.

"Haverhill has a reputation for innovation and growth coupled with a unique quality of life. It is an economic powerhouse in the borough of St Edmundsbury and presents tremendous opportunities for investors.

The town has a bright and prosperous future and we look forward to more inward investment from businesses keen to take advantage of its many benefits."

**John Griffiths, Leader - St Edmundsbury Borough Council**

"Haverhill's close proximity to Cambridge, the M11 corridor and Stansted airport, the availability of land for development and a growing, flexible labour market, make it an attractive proposition for those starting up a new business and for those companies looking to relocate.

Charged with supporting and enhancing regional economic development, the East of England Development Agency (EEDA) has been working to enhance the growth of enterprise within Haverhill through its support of Suffolk Development Agency (SDA), which has been helping to develop opportunities for further economic growth."

**Richard Ellis, Chairman - East of England Development Agency (EEDA)**

*"Haverhill is an enterprising town with an enterprising culture. We 'get things done' here, fast and efficiently. We have a broad spread of different businesses, a versatile, talented and growing workforce, and a prime location close to Stansted and Cambridge. Quality of life is high, with a blend of town and country that really works. If you are considering a new location for your business or a new place for your home, Haverhill should be your first choice."*

Richard Herbert, Chairman - Haverhill Enterprise





**'Owen the Cat'**

*An example of public art in Haverhill's Jubilee Walk.*

**HAVERHILL** is a busy, **vibrant** market town about 60 miles north east of London. With good links into the capital, **great access** to motorways, air and sea ports, and lying in some of the most **important development land** in the East of England, Haverhill holds a **winning hand**.

Haverhill's strategic location creates a wealth of opportunities, ranging from its enormous potential as a leading business and investment 'hotspot' through to establishing the town as a key regional presence.

Haverhill is a town that embraces change and is now moving forward into an exciting future as a thriving cultural, economic and residential location. It is the fifth largest town in Suffolk, and also the fastest growing town in the county. With its friendly atmosphere and family-oriented values, Haverhill is able to make the difference between just living and really enjoying life.

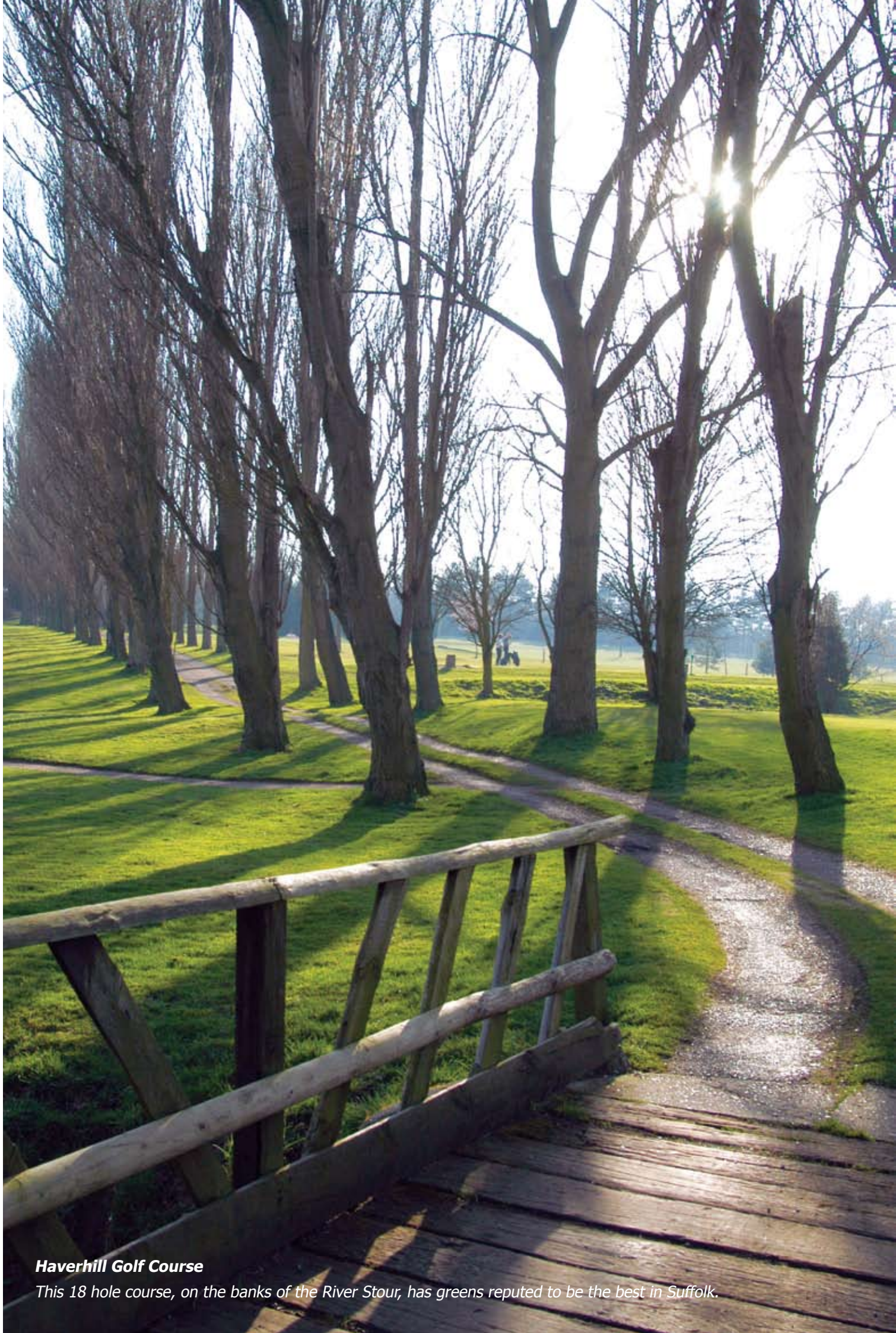
In 2006 a new brand identity was created for Haverhill. The logo's triangular shape represents the town's position on the borders of Cambridgeshire, Essex and Suffolk, and its proximity to Cambridge, Stansted Airport and the M11 corridor. Through referencing the Haverhill postcode - 'CB9' - the logo amplifies the Cambridge locale.

All the energy, warmth and vigour of the town's character are captured exactly in the buoyant appearance of the logo.



*Some 23,000 people are proud to call Haverhill their home!*





**Haverhill Golf Course**

*This 18 hole course, on the banks of the River Stour, has greens reputed to be the best in Suffolk.*

**LOCATED** in Suffolk, one of the UK's most **beautiful** and **unspoilt counties**, Haverhill is surrounded by **green spaces** which feature parklands, forestry, nature reserves, golf courses and **picturesque villages**.

A popular market takes place on Fridays and Saturdays and the part-pedestrianised High Street has a large number of local shops and businesses. Major supermarkets and retailers are also well represented in the town; and for dedicated shoppers Cambridge is just around the corner.

The rise in population and the change in demographics are continuing to focus the attention of retailers on Haverhill. In recent years, it has enjoyed an economic renaissance, occasioned by its proximity to Cambridge. Consequently the retail sector is expanding to match the needs of the growing number and increasing affluence of the town's inhabitants.

There is a wide range of cultural and leisure opportunities on offer as well as numerous pubs, bars, cafés and restaurants. The latest addition to the town centre is a £9 million multiplex cinema.

With a crime rate well below the national average, Haverhill is a safe, family-friendly town which delivers an excellent quality of life. From urban buzz to rural tranquility, the town is building on its mixture of business, residential and countryside environments to create places where people want to live, work, study and enjoy themselves.

*Whether you prefer walking in a park, ten pin bowling or watching the latest film, there's something for everyone in Haverhill.*

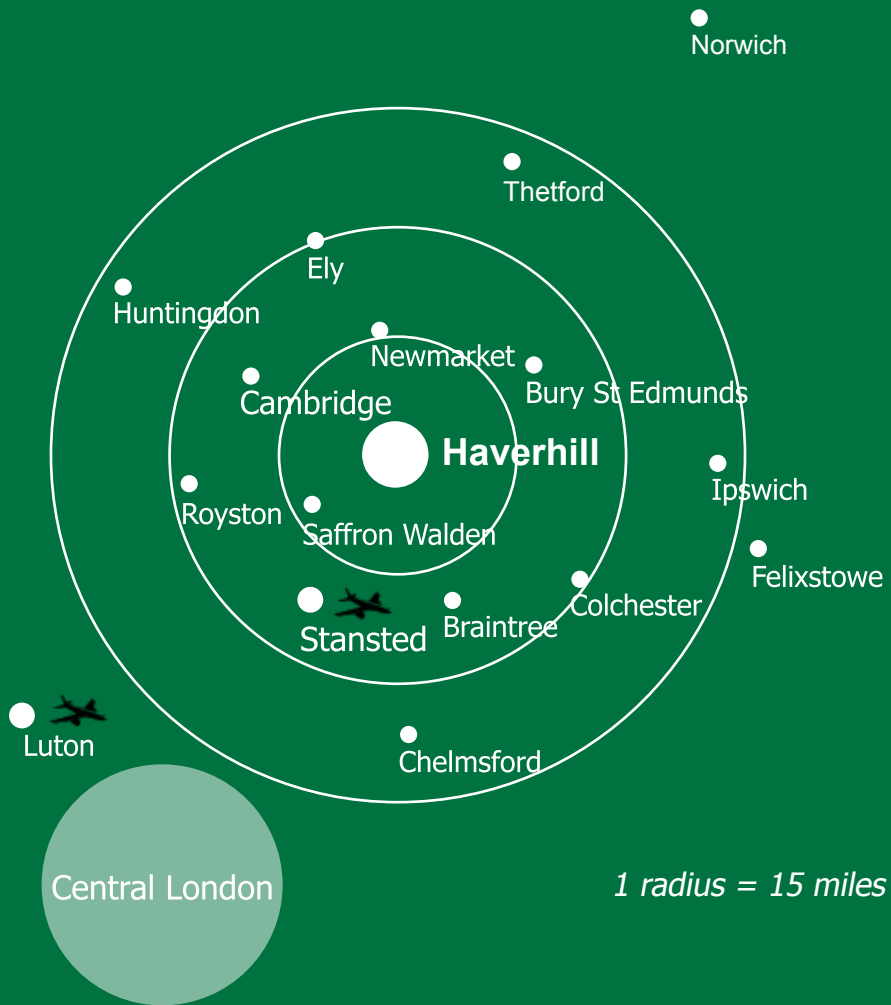


*"The borough council's role is to underpin the vigour of Haverhill's economy with the appropriate infrastructure. For a number of years we have made the future development of the town a cabinet commitment and have developed a town centre masterplan, with £10 million funding for pump priming and helping to get major projects moving."*

John Griffiths, Leader - St Edmundsbury Borough Council



## Location of Haverhill



*Haverhill is located just 40 minutes away from Europe's fastest growing airport at Stansted, which connects with over 160 destinations in over 35 countries.*

*The East of England has been described as a 'hotspot' of culture, sport and entertainment offering a quality of life second to none.*



# Haverhill: space to breathe



a) Stansted Airport b) Kentwell Hall c) Audley End House d) Newmarket Races  
e) Cambridge f) Bury St Edmunds g) Southwold h) Aldeburgh

An outstanding destination from an economic viewpoint, Haverhill is also positioned in some of the most attractive countryside in the East of England. Renowned for its big skies and the wonderful light so beloved of Gainsborough and Constable, Suffolk offers fabulous natural resources providing endless choice for outdoor activities.

Haverhill is close to many world-class attractions like the University of Cambridge, the Fitzwilliam Museum and the Imperial War Museum at Duxford. Newmarket racecourse, home of British horseracing, is only ten miles away and the historic towns of Bury St Edmunds and Colchester are within easy striking distance.



The immediate area delivers a wealth of atmosphere and a unique calendar of events including the Cambridge Film Festival, medieval jousting at Hedingham's 11th century castle and all the splendour of the proms at Audley End House.

To the east, the world famous wool towns of Clare, Melford, and Lavenham, with their timber-framed cottages and antique shops, stretch like a necklace between Haverhill and the Suffolk coast.

In contrast, the region is also associated with the thrills, spills and glamour of motor sport at Snetterton Circuit and Santa Pod Raceway. Indeed, Haverhill has its very own automotive cluster with Pace Products, Pro Alloy Motor Sport, Ultra Precision and Taylor's Motor Sports all operating from within the town.

All this and space to breathe...

**Biotechnology Sector**

*Haverhill is home to a number of prestigious biotechnology companies.*



**HAVERHILL** offers one of the most **diverse, dynamic** and **thriving** economies in the eastern region. The stability of a developed town, the opportunity of a **vibrant** emerging market and a climate that fosters growth all encourage a **first class** business culture.

The town offers a combination of six basic factors that make it highly competitive as an investment destination:

- *an adaptable, skilled and productive workforce*
- *a wide range of modern, cost-competitive property options*
- *a strong supplier network for many key sectors*
- *a good transport infrastructure*
- *a network of academic centres with an established track-record of collaboration with industry*
- *an attractive physical environment with good cultural and leisure facilities*



Haverhill is already home to a wide variety of forward thinking, nationally and internationally renowned companies. These include Wisdom Toothbrushes, AXA Insurance, Grampian Country Pork and Figleaves. A part of the Cambridge sub-region, the UK's premier technology R&D hub, the town has also attracted several prestigious biotechnology companies such as Genzyme and Sigma Genosys. As a result:

- *Haverhill is home to a diverse range and balance of manufacturing and service industries*
- *several sectors are growing into globally significant flagships for the town, including the biotechnology industry*

Haverhill is positioned within one of the most extensive infrastructures in Europe, making passenger travel and the movement of goods swift, easy and cost effective. Located just 40 minutes away from Europe's fastest growing airport at Stansted, which connects with over 160 destinations in over 35 countries, Haverhill is also only 35 miles west of the UK's largest container port at Felixstowe. In addition, the town is close to the M11 which means London is just over an hour away!

All of this adds up to an open door between business in Haverhill and profitable markets worldwide.

*There's never been a better time to make a move to Haverhill.*





"Most of what we need to create our product exists in this town. Our sub-contractors support us well and there is a good local labour pool. We wouldn't put our company anywhere else."

Delstar



## ADAMS HARRISON

A highly respected firm of solicitors based in Haverhill since 1971, Adams Harrison offer a comprehensive range of legal services tailored to meet both personal and business needs.

"Adams Harrison has benefited significantly from being in Haverhill due to the increased prosperity attracted to the town."

Paul Cammiss, Partner  
Adams Harrison Solicitors

## ARDEX

For over 50 years Ardex has been synonymous with the development, manufacture and marketing of high quality specialist materials for the flooring, tiling and rendering industries. Founded in London in 1960, Ardex UK relocated to its current headquarters in Haverhill in 1987.

## AXA

AXA Group is a worldwide leader in financial protection and is one of the largest general insurers in the UK. Launched in January 1998 as Provincial Insurance following the merger of the UAP and AXA Group in 1997, the Group changed its name to AXA Insurance in October 1998. The AXA Insurance office in Haverhill was erected in the 1970s and provides office accommodation for over 300 staff.

## DELSTAR

Founded in Haverhill over 30 years ago, Delstar Engineering is the oldest surviving stage engineering and scenery contractor in the UK. Well known for designing and manufacturing the mechanical and hydraulic equipment for *Lord of the Rings* in North America and London and the flying car in *Chitty Chitty Bang Bang*, Delstar have installed all types of stage and auditorium equipment in theatre and opera houses across the world.

"Most of what we need to create our product exists in this town. Our sub-contractors support us well and there is a good local labour pool. We wouldn't put our company anywhere else."

Ken Golding, MD  
Delstar Engineering

## D. GURTEEN & SONS LTD

D. Gurteen & Sons Ltd was established in Haverhill in 1784 and for 150 years was the main employer in the town employing over 2000 people. The business started with weaving cloth, and grew into the manufacturing of men's outer clothing. It is now in the hands of the seventh generation of the Gurteen family.

Gurteen clothes can be found in most major independent retailers throughout the country, and also under their own labels in many stores, including Austin Reed, John Lewis, House of Fraser, Boden, Moss Bros and Harrods.

# Haverhill Business: a snapshot

*"One of the smartest business decisions made by Figleaves since its launch in 1998 was to move its customer operations centre to Haverhill."*

Figleaves



## ENSORS CHARTERED ACCOUNTANTS

Ensors chartered accountants are one of East Anglia's largest and most respected firms of independent chartered accountants and business advisors.

"We have worked closely with a broad variety of clients in Haverhill for in excess of 50 years. Haverhill has always had a thriving, outward looking business community."

Graham Page, Partner  
Ensors Chartered Accountants

## FIGLEAVES

Having outgrown their London warehouse, Figleaves, the world's largest online retailer of branded lingerie, relocated to Haverhill in 2003. Continued brisk growth meant that in 2006 they were forced to move again from their original site to a new warehouse which was two and a half times bigger. In 2007 they increased the internal capacity of the building to cope with ever increasing demand and continued expansion. Figleaves currently ship to 95 countries from their Haverhill warehouse.

"One of the smartest business decisions made by Figleaves since its launch in 1998 was to move its customer operations centre to Haverhill."

Mark Patterson, Director of Supply Chain - Figleaves



## GENZYME

Genzyme Corporation is one of the world's leading medical biotechnology companies and is dedicated to making a major positive impact on the lives of people with serious diseases. The site at Haverhill was acquired in 1982 and is now a major manufacturing and distribution facility.

"The Haverhill site has become a critical one for Genzyme and during the past 25 years has developed a number of unique skills that the parent company and patients rely on every day. We now employ over 300 people at Haverhill and have invested more than £100 million in the site. This and other investments reflect Genzyme's ongoing commitment to the area."

Simon Cousins, Vice President and General Manager - Genzyme Haverhill Operations

## HID GLOBAL

HID Global is a leading manufacturer in the access control industry, serving customers worldwide. The company's product offerings can address a broad scope of security needs allowing an organization to seamlessly transition from simple low frequency card and reader proximity installations to highly integrated contactless smart card solutions. HID's European headquarters is in Haverhill.

*"A further advantage is the availability of excellent staff especially those recruited from the local schools."*

Gillian Blackmore, Managing Director - Cyberaid





## INTERNATIONAL FLAVOURS AND FRAGRANCES

IFF is a world leader in the creation and manufacture of flavours and fragrances. UK operations are largely centred upon the Haverhill facility, where over 300 people are employed. Sales in excess of £100 million per annum are generated from the site with products servicing markets across the globe.

"2007 saw us celebrate 50 years in Haverhill. This longevity bears testimony to the excellent relationship that we have enjoyed with the local community and the ongoing commitment and efficiency of our workforce."

Philip Gardner, Finance Director and Country Manager - IFF

## MARCHANT MANUFACTURING

Marchant Manufacturing was established in Haverhill over 35 years ago and employs around 120 people at the site. The company manufactures a range of household polythene bags for retailers, industry and local authorities.

"We have always found most of the skills that we need for our business in Haverhill."

Philip Marchant, Chairman Marchant Manufacturing

## PERCY DALTON'S

Founded in the 1930s, Percy Dalton's is one of Europe's leading importers, processors and packers of nut, seed and dried fruit products. Percy Dalton's was one of the first businesses to open on the Haverhill Business Park after relocating from its former base in London in 2005. Percy Dalton's produces around 10,000 tons of nuts every year from its 'state of the art' factory in Haverhill.

"We chose Haverhill because favourable property and development costs made the decision to relocate a simple one. The town's proximity to London also helps us retain our links with the capital which is important for us."

Michael Dalton, MD Percy Dalton's

## PRINTWISE

Printwise has been established in Haverhill since 1972. Continued growth led to a move to purpose-built premises in 2002 and the company now operates from four sites within the town in the litho and digital print, bookbinding and fulfilment sectors. Initially the majority of Printwise's customers were local but growth in recent years has meant that Printwise now serves a wider market across the UK.

"Haverhill's location is an ideal base from which Printwise can extend its reach geographically and its growth economically."

Terry McGerty, Chairman Printwise (Haverhill)

# Haverhill Business: a snapshot



## PURE ENERGY MULTIMEDIA

Established in Haverhill in 1998, Pure Energy is now widely considered one of the area's most successful and influential full service marketing agencies. Continuing to set new benchmarks in visual communications, the company offers a combination of sound technical expertise and a creative, yet pragmatic approach to all commissions.

"Haverhill provides a dynamic and vibrant environment for 21st century business. We have flourished here."

Jason Fitzpatrick, MD  
Pure Energy Multimedia



## SIGMA GENOSYS

Sigma Genosys is a global leader in the manufacture of speciality products for the molecular biology market. Part of the Sigma-Aldrich Corporation, a leading life science and high technology company, Sigma Genosys relocated to Haverhill in 2004.

"Moving to Haverhill, after running out of space at our existing Pampisford location, allowed us to create a brand new purpose-built facility that was designed to meet our manufacturing workflow and provide space for expansion without increasing our overheads. We remain in close proximity to a large number of our UK customers based in and around the Cambridge biotech cluster."

Jonathan Pierce - Sigma Genosys



## TAYLOR'S FOUNDRY

Taylor's Foundry is a traditional casting manufacturer. Founded in 1946, the company expanded and moved to Haverhill in 1961. Under the guidance of the third generation of the family, the company continues to provide a complete range of services, offering castings in aluminium, bronze, brass, zinc, iron, stainless steel and high integrity ferrous alloys.

"Haverhill has the X factor – that unique combination of facilities and support that creates the environment and infrastructure necessary for success."

Gerry Taylor, Chairman  
Taylor's Foundry



## TERENCE BARKER LTD

Established for over 30 years, Terence Barker Ltd specialises primarily in the manufacture of fuel storage tanks. Their products are dispatched throughout the UK and exported world-wide.

"We chose to relocate our business from Braintree to Haverhill because there was industrial land available at a very reasonable price. We have found that there is a good pool of skilled labour locally and other businesses on our doorstep which provide valuable services. I am convinced that we made the right choice."

Terence Barker, MD  
TB Tanks Ltd



## THE CAMBRIDGE SUSHI COMPANY

In a world where food is often mass-produced, The Cambridge Sushi Company stands out for supplying fresh sushi made from the very finest ingredients. Based in Haverhill since 2006, the company is within easy striking distance of Cambridge which is a very important market for its product. It has an enviable client list including some of Cambridge University's oldest established colleges and is a big hit with firms like Takeda, Toshiba and Qualcomm at the Cambridge Science Park.

"Freshness of our product is paramount. By being in Haverhill, we can deliver the Sushi daily to Cambridge and elsewhere without paying a premium rent on the premises."

Duncan Galloway  
The Cambridge Sushi Company



## THE HERBERT GROUP

The Herbert Group has been established in Haverhill for over 40 years and now employs around 250 people in more than double the space it originally occupied.

From its origins in Smithfield Market, London in 1760, the 21st century sees Herbert as the key solutions provider for many food retailing outlets and industrial food processing plants. Their creative and original application of the latest weighing, labelling, data capture and display technologies ensures that today Herbert equipment is found in all the UK's main supermarkets and the major fresh food producers.



## THE JAN CAVELLE FURNITURE COMPANY

The Jan Cavelle Furniture Company manufactures and supplies furniture to the high-end of the interior design trade. The company moved to Haverhill in 2000 and has an impressive track record. In contrast to national trends in manufacturing, they have expanded continually since the millennium.

"This is an innovative, go-ahead company with an exciting future, exactly the sort of company that is putting Haverhill on the business map."

Richard Spring  
MP West Suffolk



*And these are just some of the success stories...*

*"The right infrastructure - like transport and housing - is in place to make the town an appealing place in which to work and live."*

Gerry Taylor, Chairman – Taylor's Foundry



# Haverhill Business: culture of collaboration

Businesses in Haverhill enjoy the support of several business groups including Haverhill Chamber of Commerce and Haverhill Enterprise. These bodies facilitate industry networking, sharing of good practice and collective action on issues of common interest. They also act as a voice for local business.

## HAVERHILL BUSINESS EXHIBITION

Established in the early nineties, the Haverhill Business Exhibition continues to provide an excellent platform to network, generate sales leads and build new relationships. Organised by Haverhill Enterprise, it remains the cornerstone of Haverhill's business community bringing people together in one place at one time.

*"The whole event had a real buzz. Brilliant!"*

Geoff Carter - Suffolk Insurance

## HAVERHILL BUSINESS AWARDS

The inaugural Haverhill Business Awards, organised by Haverhill Chamber of Commerce, were held in 2005 and were an outstanding success. Designed to showcase the brightest and best in Haverhill Business, the initiative has continued to focus a regional spotlight on the area and its business community.



*"Haverhill people are justifiably proud of their town. They are forward looking and excellent at working in the type of partnerships which deliver real benefits. Haverhill Enterprise is a superb example, bringing together people from across the business community with a strong sense of purpose and dynamism."*

John Griffiths, Leader - St Edmundsbury Borough Council



*"You have certainly revolutionised the concept of chambers of commerce with this glittering event that was very much 'state of the art' and 21st century."*

Tim Marks, Mayor - Haverhill (2005)

**Haverhill Business Park**

*The park covers 55 acres of development land.*





# Haverhill Business Park: a number one location

With the capacity for at least a further 28 acres of development, Haverhill Business Park is fast becoming a popular destination for companies wanting to relocate and upgrade facilities.

In 2007 alone, developer Carisbrooke gained planning permission for major earthworks on the business park to provide a level platform for large scale future development. The area involved is equivalent to sixteen football pitches and has the potential for a 500,000 sq ft industrial facility.

For the small occupier, planning consent was granted for Boudicca Court, an office development made up of seven new office units measuring 1,717 sq ft to 16,100 sq ft, which are available on a buy or let basis.

Companies looking to relocate to the park will join the likes of Buildbase Builders Merchants, which moved there from Haverhill town centre; Percy Dalton's Famous Peanut Company, which has been based on the park since 2005; Terence Barker Ltd - a company specialising in the manufacture of fuel storage tanks; distribution giant Culina Logistics, who have set up a distribution centre for Müller Dairy (UK); HID Corporation - the premier manufacturer of contactless access control cards and readers for the security industry, and Stagecoach, one of the largest bus operators in the UK.

Haverhill Business Park has the potential for 1m sq ft (92,902 sq m) of mixed-use development including industrial warehousing, offices and research and development.

It's time to take a closer look at Haverhill...

*"With a large percentage of our clients' manufacturing facilities based on the continent and a heavy concentration of outbound deliveries in the south east of England, Haverhill provides a perfect centre for the next phase of expansion of our business."*

Rien Brakel, Managing Director - Culina Logistics

## Haverhill: a gilt-edged opportunity

Haverhill is the fifth largest town in Suffolk and the second largest in the Borough of St Edmundsbury. In recent years the town has seen the development of modern business parks and major town centre investments.

Haverhill's population currently stands at around 23,000 and is set to reach 30,000 by 2015. Young people account for one third of the population. This youthful profile presents a gilt-edged recruitment opportunity for potential investors.

Furthermore, employment costs in Haverhill are lower than the national average - around 13% lower - and 30% lower than Greater London.

This winning combination of working age population increase and competitive wage rates is just part of a whole host of positive trends and key competitive assets that offer benefits to businesses.

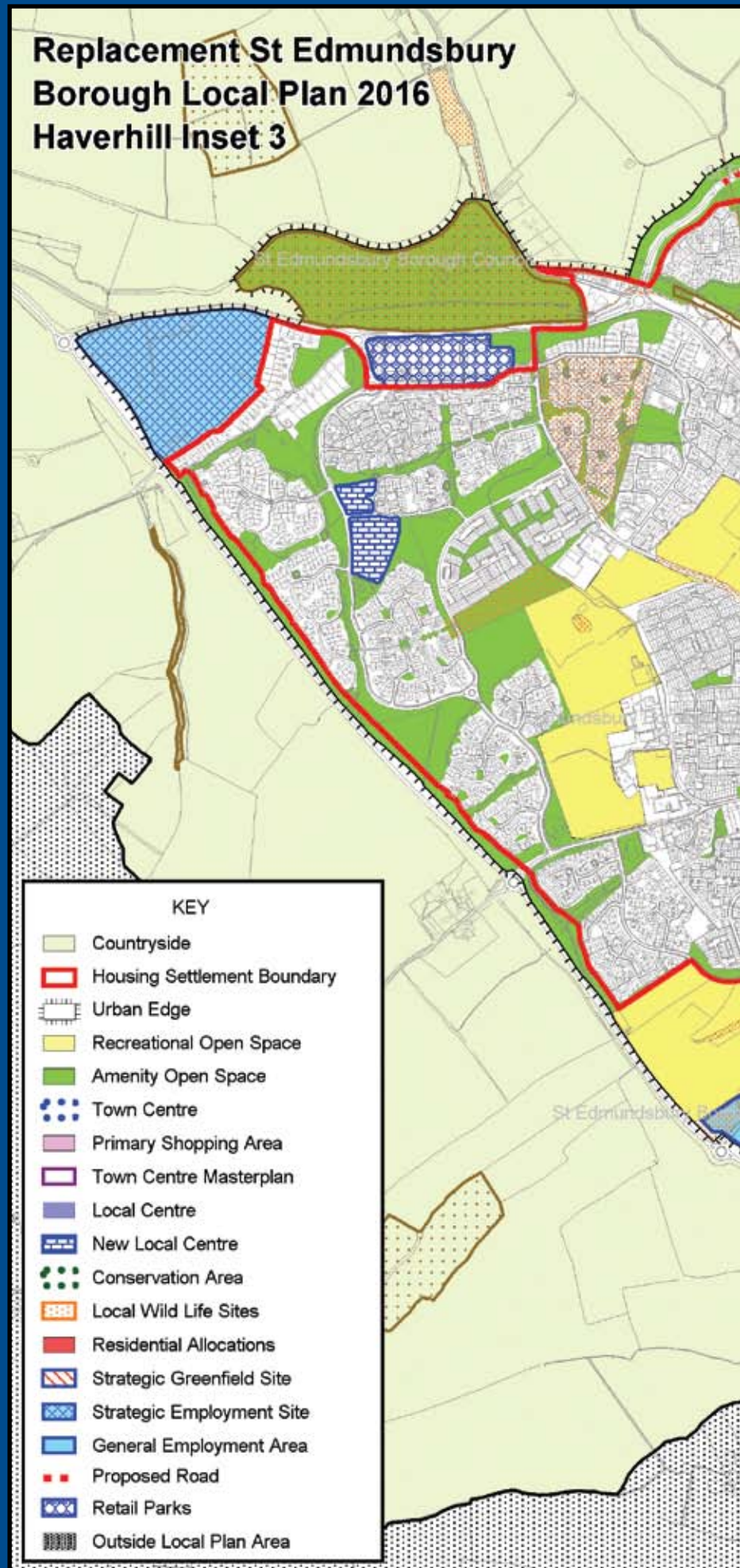
## Haverhill: a higher standard of living with a lower cost of living

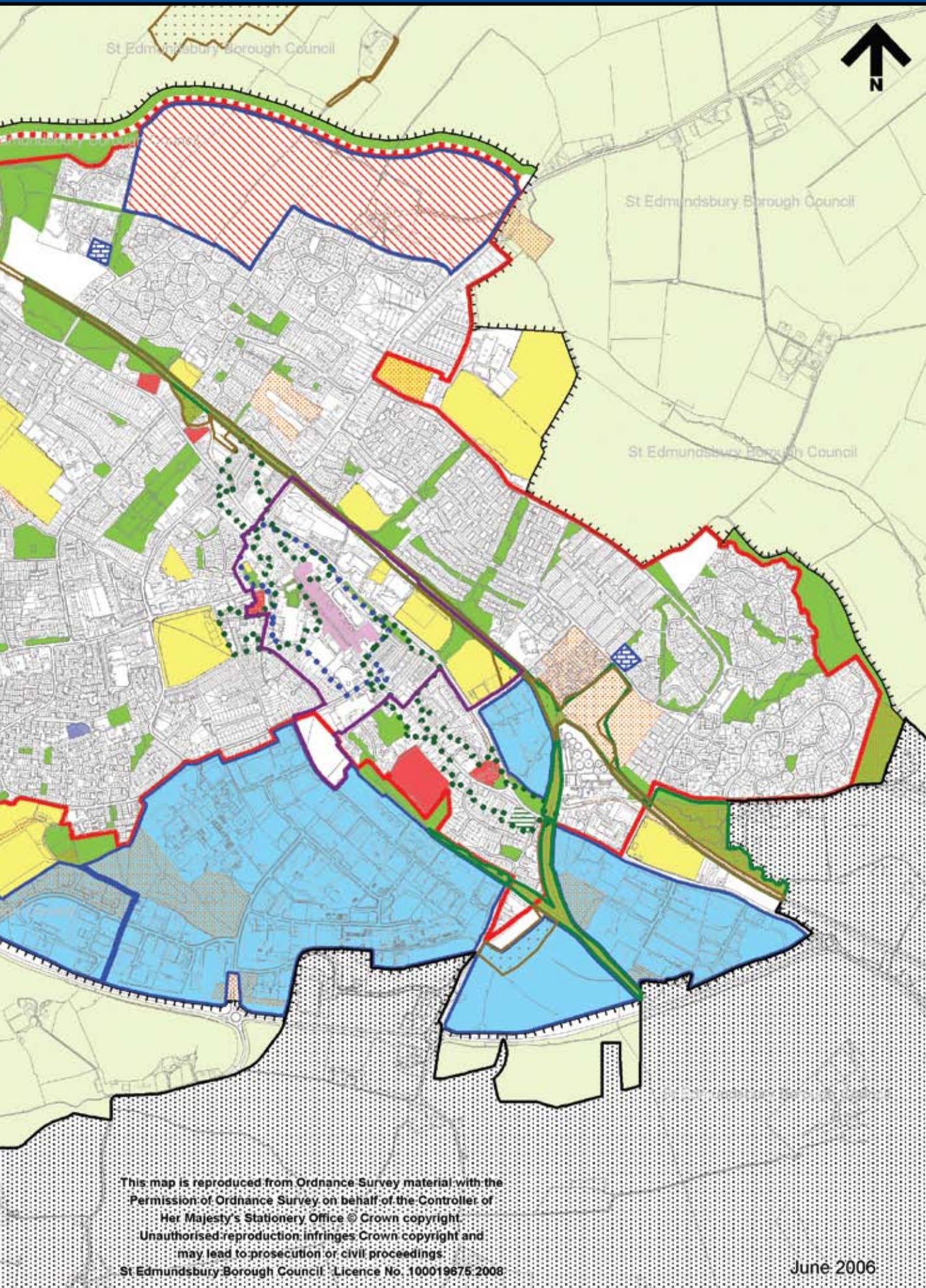
Residential property costs in Haverhill are very competitive and the town is able to offer a high proportion of new build executive housing on modern developments as well as traditional town centre options.

Haverhill was recently featured in the Halifax Quality of Life index as one of the top ten towns in the country offering the best value for money location for terraced properties under £150,000.

A first class location for families, Haverhill provides a range of sensibly priced housing options, a good selection of schools, a wide leisure offer, a low crime rate, a great environment and a strong sense of community.

Furthermore, with a variety of urban, suburban and rural locations to choose from, the area offers an excellent range of places to call home.





This map is reproduced from Ordnance Survey material with the Permission of Ordnance Survey on behalf of the Controller of Her Majesty's Stationery Office © Crown copyright. Unauthorised reproduction infringes Crown copyright and may lead to prosecution or civil proceedings. St Edmundsbury Borough Council Licence No. 100019675/2008

June 2006

**Haverhill Leisure**

*Sports and leisure facilities within Haverhill are superb.*



**SPORTS** and **leisure** facilities within Haverhill are **superb**, with all major sports and many lesser known ones **well represented**.

A new football ground is proposed for the north of Haverhill which will bring together a range of footballing activities from Haverhill Rovers FC to a football academy and ladies' football.

Haverhill rugby, cricket, tennis, golf, bowls and snooker clubs are all thriving. Running, swimming, squash and a multitude of other sports take place at the town's leisure centre, along with a wide range of family activities from tots' football to raft building and ballroom dancing.

Cinema and ten-pin bowling facilities are also available within the town and groups such as the Scouts, Brownies, Guides, Army Cadets and dance and entertainment schools are all well established, not to mention family history, choral, drama, angling and martial arts groups amongst many others.





## Haverhill Festival

The highlight of Haverhill's cultural year is the annual Haverhill Festival, held in the last two weeks in June. Widely regarded as one of Suffolk's most successful arts festivals, it brings scores of international musicians, dancers and performers to the town for a fortnight long extravaganza that even spills on to the streets.



## Haverhill Music

Haverhill's thriving music scene is not to be missed and offers an impressive array of jazz, country, rock, folk, indie and classical. For those who appreciate their music loud, hard and fast the Haverhill Rock Competition takes some beating.

At the opposite end of the music spectrum is the award winning Haverhill Silver Band; while the town takes a place on the world stage with its very own internationally acclaimed, symphony orchestra, the Haverhill Sinfonia.





# Haverhill Arts: brilliant by any measure



Haverhill enjoys a vibrant arts scene all year round. A lively and progressive arts programme run by the town council determines much of this cultural experience. Haverhill Arts Centre regularly plays host to a wide range of activities and is associated with a strong tradition of excellence.

## Haverhill Arts Centre

Housed in the town's former civic hall, Haverhill Arts Centre is an impressive nineteenth century building with a Grade II listing. It has now been restored to its full splendour and plays host to over 250 events each year.

The eclectic nature of the centre's calendar of events helps to promote cultural diversity and encourage community cohesion. Its gift for producing dynamic and ambitious arts and entertainment programmes is legendary.

Arts and culture are at the heart of this town where creative energy flourishes.





**Education**

*Educational facilities within Haverhill are excellent.*

**EDUCATIONAL** opportunities in Haverhill are **excellent** with a **wide range** of schools, childcare facilities and private educational establishments all available in the town and surrounding area. Adult education is also widely available.

The town's two upper schools, Samuel Ward Arts and Technology College and Castle Manor Business and Enterprise College, are thriving. Samuel Ward's ethos looks towards the future; the school's slogan is: "The best way to predict the future is to create it.". Castle Manor focuses on the pride and achievements of its pupils, asking: "What have you done today to make you proud?". These positive messages are reflected in the schools' results.

At the other end of the educational spectrum childcare facilities and early years' education are well supported in the town. There are several children's centres offering integrated education, care, family support and health services to the local community while providing childcare for children from birth to five years and from five to twelve years. All have received positive Ofsted reports.



*"Haverhill is a town where education and business work side by side so that young people can gain the skills, experience and awareness relevant to modern society."*

Simon Cousins, Vice President - Genzyme Haverhill Operations



**St. Mary's Parish Church**

*Situated at the heart of the town, St. Mary's Church links the new Haverhill with its past.*

# Haverhill: a true sense of community

Haverhill boasts an extensive range of health services, from doctors and dentists to chiropodists, counsellors, physiotherapists and complementary therapists. In addition, there are proposals to develop a new 'state of the art' health clinic.

There is a wide selection of day and residential care facilities for elderly and disabled people, and there are well used shopmobility and dial-a-ride schemes in the town. Support is also available in and around Haverhill for people with diabetes, learning difficulties, mental illness, arthritis and many other conditions.

Religious and spiritual matters have long been at the heart of Haverhill's history and development and most Christian faiths are represented. There are several impressive churches such as St. Mary's Parish Church on the Market Square and The Old Independent Church on the eastern side of town. Many of the town's churches have thriving congregations and are very much at the centre of their respective communities.





**St. Mary's Parish Church**

*A late 19th century view of St. Mary's Church.*

**Haverhill's** origins, like those of many other ancient towns of England, are lost in the mists of time. The earliest mention of it is in the **Domesday Book** of 1086 which records a market, and it is to this that the town owes its early importance. A **castle** is referred to in the early medieval period, but until the 14th century the town was essentially an agricultural area enjoying the privileges of a weekly **market** and two annual **fairs**.



During the Middle Ages, Haverhill developed into one of East Anglia's prosperous wool towns. As a result, in the 17th century it became a natural haven for refugee Huguenot and Flemish weavers, who settled here and introduced new methods of weaving.

When the wool trade receded, it was replaced by the manufacture of 'checks' and 'fustians', then silks and drabbets. After the introduction of the steam loom by Gurteen's in 1856, this manufacture became the principal industry.

Whilst most of the historical buildings were lost to the great fire of June 14 1667, the town retains one notable Tudor structure, Anne of Cleves House, reportedly given to Anne as part of her divorce from Henry VIII.

There are many fine Victorian buildings, among them the Board Schools built in 1877, the Town Hall in 1883 and the Old Independent Church in 1884. Haverhill is still regarded as the nonconformist capital of the region.

In 1801 the population stood at 1,104, by 1841 it had nearly doubled to 2,159, and by 1911 it had risen to 4,749. In the 1950's an expansion scheme between the Haverhill Urban District Council and the London County Council was initiated, and by 1957 the first factories to be set up under this programme were being opened.

Today the town continues to expand, mainly through private development and investment, and has already grown into one of the largest towns in Suffolk.





*The flavours and hospitality of the area are waiting to be savoured at trendy cafés, restaurants, lively pubs, hotels and guesthouses in and around Haverhill. There's something to suit all tastes and budgets and a welcoming spirit at every turn.*

## DAYS INN HOTEL

The Days Inn on Haverhill Business Park, with 80 ensuite rooms, offers a combination of smart accommodation, conference rooms and spacious lounge areas. Business and leisure guests will find everything necessary for a comfortable stay in 21st century facilities. The hotel offers great value for money, combined with an excellent location on the A1017 southern bypass.

## THE HARVESTER

The Harvester pub and grill, also located on Haverhill Business Park, is a big hit with the business park's working community and local people alike. With the capacity to seat 180 people for lunch or dinner, it is a perfect place to unwind after work or to meet for an informal working lunch.



## THE FOX

This very contemporary, vibrant gastro-pub on the A143 regularly offers live entertainment and attracts a wide clientèle from the town and surrounding areas.

## THE ROSE & CROWN

This individual and atmospheric town centre establishment provides a warm welcome and reasonably priced accommodation.

## DÉJÀVU

One of Haverhill town centre's most popular cafés, this thriving bistro is perfect for breakfast or lunch with friends, or if you're pushed for time, a takeaway salad or sandwich, coffee or freshly squeezed smoothie. With indoor and outside seating and an ice-cream stand in the summer, Déjàvu captures the friendly spirit of Haverhill with its freshly made food and cheerful atmosphere.





# Haverhill: flavours and hospitality



Around and about the area...

## THE BELL HOTEL, CLARE

The Bell Hotel at Clare provides the best of both worlds, combining the intimacy and charm of a traditional 16th century half-timbered inn with a contemporary wine bar and restaurant.

## THE SHIP, CLARE

Just seven miles from Haverhill and occupying a central position in the picturesque wool town of Clare, this comfortable, popular bed and breakfast provides excellent value all round.

## THE WHITE HORSE, WITHERSFIELD

This very popular, thatched, 17th century public house boasts a highly rated restaurant with an extensive menu, and comfortable ensuite accommodation.

## THE WHITE HART, GREAT YELDHAM

Highly renowned and dating back to the 14th century, this former coaching inn is located in a beautiful riverside setting. The hotel offers elegant dining areas, excellent cuisine and good accommodation.

## CHILFORD HALL, LINTON

Located within a 50 acre working estate and vineyard, Chilford Hall offers a wide range of facilities, catering for any event from intimate dinners, through to conferences, exhibitions, summer balls and staff parties.



### **Haverhill Sculpture**

*Created by Daphne Hardy Henrion in the early 1970s, this expressionistic sculpture is a social observation on the major increase in the town's population that occurred during the expansion period. The town's medieval church and 19th century factory are depicted within a ring of contemporary figures: shoppers with baskets, twin children in a pram.*



*Courtesy: Mr & Mrs D Unwin*

## Useful Contacts

### Haverhill Town Council

01440 712858

[www.haverhill-uk.com/towncouncil](http://www.haverhill-uk.com/towncouncil)

### St Edmundsbury Borough Council

01284 763233

[www.stedmundsbury.gov.uk](http://www.stedmundsbury.gov.uk)

### Haverhill Chamber of Commerce

01440 703974

[www.haverhillchamber.co.uk](http://www.haverhillchamber.co.uk)

### Official Haverhill Website

[www.haverhill-uk.com](http://www.haverhill-uk.com)

### Haverhill Job Centre Plus

01440 753900

### Haverhill Arts Centre

01440 714140

### Haverhill Health Clinic

01440 766000

### Haverhill Leisure Centre

01440 702548

### Haverhill Library

01440 702638

### Social Services

01284 352000

### Haverhill Police

01284 774470

## Support Organisations

### Haverhill Enterprise

Haverhill Enterprise is a business group within the town. It encourages inward investment as well as helping to promote existing businesses, by maintaining strong links with relevant local and national authorities and local economic agencies.

[www.haverhillenterprise.co.uk](http://www.haverhillenterprise.co.uk)

### St Edmundsbury Economic Development Services

- Encourages the development of new and existing enterprise
- Provides the infrastructure for economic development
- Ensures an adequate supply of commercial sites & premises
- Promotes the economic vitality & prosperity of the town centre
- Enhances the environment & encourages sustainable development
- Helps develop the skills of the local workforces

01284 757114

[www.stedmundsbury.gov.uk/business](http://www.stedmundsbury.gov.uk/business)

### Suffolk Development Agency

The SDA offers a free business relocation support service, extensive commercial/land search, key contacts and sources of advice, background information, statistical and research data.

0844 4990888

[www.choosesuffolk.com](http://www.choosesuffolk.com)

### East of England Development Agency

EEDA is the driving force behind sustainable economic growth and regeneration in the East of England.

01223 713900

[www.eeda.org.uk](http://www.eeda.org.uk)

### Greater Cambridge Partnership

The GCP offers advice, guidance on funding and general information about the Greater Cambridge area.

01223 717310

[www.gcp.uk.net](http://www.gcp.uk.net)

### East of England International

E EI delivers UK Trade & Investment services to regional businesses wanting to trade internationally. It also provides free and confidential advice to overseas-owned companies wanting to establish a presence or expand in the UK.

01223 450450

[www.eei-online.com](http://www.eei-online.com)

### Haverhill Business Park

01440 714277

[www.haverhillbusinesspark.co.uk](http://www.haverhillbusinesspark.co.uk)

### Letting agents for Haverhill Business Park

For more information contact Carter Jonas on 01223 368771 or Rumsey & Partners on 0207 499 6619.





[www.haverhillenterprise.co.uk](http://www.haverhillenterprise.co.uk)

Haverhill Enterprise Limited

E-mail: [info@haverhillenterprise.co.uk](mailto:info@haverhillenterprise.co.uk)

*Haverhill: a spirit of enterprise*



*St Edmundsbury*  
BOROUGH COUNCIL

Supported by St Edmundsbury Borough Council

**Colophon**

**Graphic Design:** Pure Energy Multimedia & Printwise (Haverhill)

**Copy:** Gold PR

**Supplementary Copy:** Lisa McGerty

**Lead Photography:** Pure Energy Multimedia

**Supplementary Photography:** Samuel Ward School, The Design Office, Henry Wilson, Haverhill Echo and local companies.

**Print:** Printwise (Haverhill)

**Cover Photograph:** Genzyme Haverhill Operations

No part of this publication may be reproduced, copied or transmitted in any form or by any means or stored in any information storage or retrieval system without the publisher's written permission.

